

## Antibody Pair for Sandwich ELISA

Abnova provides a total solution for antibody pair development for quantitative measurement of your protein of interest. Leveraging our mouse monoclonal antibody manufacturing capability and our new MaxPab technology for production of rabbit polyclonal antibody from full-length protein, Abnova allows you to focus on more important parts of your research instead of the arduous task of searching and testing for the matching antibody components.

### Services

- cDNA Sourcing and Cloning
- Recombinant Protein Expression and Purification
- Mouse and Rabbit Immunization
- Screening Matched Mouse Mab and Rabbit Pab
- Standard Curve Construction using Recombinant Protein
- Validation on Mammalian Transfected Lysates for Native Protein Recognition
- Delivery of Mouse Hybridoma and Rabbit Pab Serum

### Advantages

- High Specificity
- High Signal to Background Ratio
- Multiple Epitopes Target Detection
- Amenable to S-ELISA and System Applications

#### Antibody Production

Full-length Protein

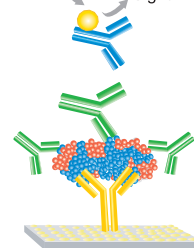


Full-length Protein



#### Antibody Pair for Sandwich ELISA

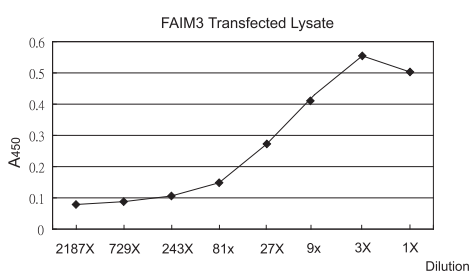
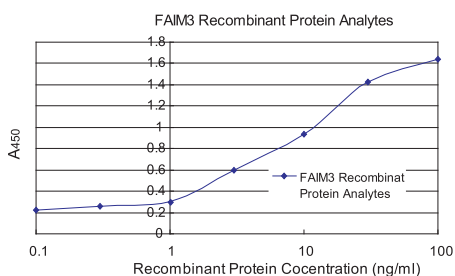
Substrate → Signal



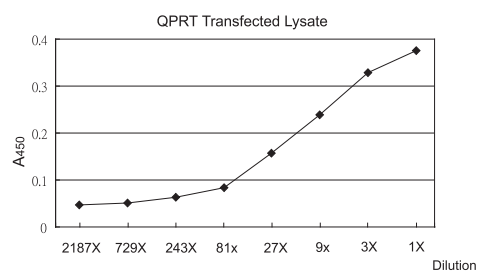
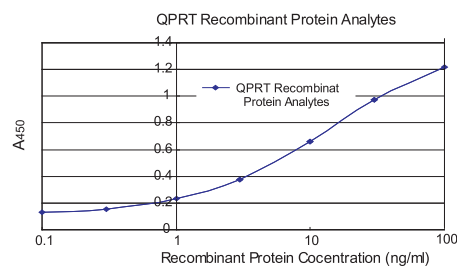
- Goat anti rabbit Ig (H+L), HRP conjugated
- Rabbit polyclonal antibody
- Antigen
- Mouse monoclonal antibody

#### Colorimetric Detection

FAIM3 Mouse Monoclonal Antibody (Catalog #: H00009214-M01)  
FAIM3 Rabbit Polyclonal Antibody



QPRT Mouse Monoclonal Antibody (Catalog #: H00023475-M01)  
QPRT Rabbit Polyclonal Antibody



Antibody Pair for Sandwich ELISA Service			Standard Package	Delux Package				Premium Package	
Phase I	Payment 1	(USD) Non-refundable startup fee	400	680	800	1,000	1,300	1,500	2,500
	Antigen Preparation	cDNA sourcing and cloning				✓		✓	✓
		Recombinant protein expression and purification					✓		✓
		Customer-supplied purified protein			✓		✓		
Phase II	Rabbit Immunization	6~8 injections per rabbit, 2 rabbits			✓		✓		✓
		Serum screening by ELISA			✓		✓		✓
		Sera collection			✓		✓		✓
	Mouse Fusion & Screening	Immunization of mice and hybridoma fusion			✓	✓	✓	✓	✓
		ELISA screen up to 1000 hybridoma clones			✓	✓	✓	✓	✓
		Stabilization of up to 20 positive clones			✓	✓	✓	✓	✓
Phase III	Abnova Catalog Antibody	Abnova catalog antibody (Mab & Mab pairing or Mab & Pab pairing)		✓					
		Antibody pair with one Abnova catalog antibody (Mab or Pab) and customer custom Mab				✓		✓	
	Customer-Supplied Antibody	Customer-supplied antibody	✓						
	Assay Development	Screening matched antibody pairs	✓	✓	✓	✓	✓	✓	✓
		Standard curve construction using recombinant protein	✓	✓	✓	✓	✓	✓	✓
		Validation on mammalian transfected lysates for native protein recognition	✓	✓	✓	✓	✓	✓	✓
Phase IV	Delivery	1. Up to 20 clones of ELISA-positive culture supernatants (2ml/clone) 2. 1mg purified rabbit Pab serum 3. 25ug purified recombinant protein and 300ul mammalian transfected lysate  sent to customer for testing		✓	✓	✓	✓	✓	✓
		Colorimetric detection data: standard curve construction using recombinant protein and mammalian transfected lysate	✓	✓	✓	✓	✓	✓	✓
	Payment 2	(USD) Non-refundable	3,600	2,040	2,400	3,000	3,900	4,500	7,500
Phase V	Customer's Testing	Data, culture supernatant and rabbit Pab sent to customer for testing		✓	✓	✓	✓	✓	✓
Phase VI	Final Deliverables	Antibody pair: 1. 300ug of mouse purified Mab 2. 50-75mg rabbit purified Pab		✓	✓	✓	✓	✓	✓
		One clone of mouse hybridoma cell (1X10 <sup>6</sup> cell/ml)					✓	✓	✓
	Payment 3	(USD) Payment 3 is paid upon final deliverables delivery		4,080	4,800	6,000	7,800	9,000	15,000
		<b>Total Lead time (Month)</b>		~3.0	~3.0	~4.5	~4.5	~4.5	~4.5
		<b>Total Price (USD)</b>	<b>4,000</b>	<b>6,800</b>	<b>8,000</b>	<b>10,000</b>	<b>13,000</b>	<b>15,000</b>	<b>25,000</b>

Note:

- "V" represents activity performed by Abnova
- Cell Line Storage (3 vials/cell line/year) - \$50

The above list price is only used for direct orders made to Abnova